

Technical college graduates are often the First to respond to communities' needs. From accounting to automotive repair, web development to welding, skilled workers are performing the most essential occupations on which Wisconsin relies—for day-to-day personal and business needs and long-term economic development.

Students who want to make a difference through a rewarding career know that the programs offered at the technical colleges will provide important career options.

Program options, flexible course delivery, increasing transferability, lower tuition costs and a reasonable time frame make the technical colleges very accessible and affordable to students.

Students like the personal attention and "real world" learning they receive. It's no wonder the number of graduates in Wisconsin's Technical Colleges has jumped 43 percent in just five years.

WHERE STUDENTS TURN | *first*

Wisconsin communities are safer and stronger with technical college graduates who bring the community together.

Public safety officers, EMTs and fire fighters are the first to respond to most health and safety demands of families and the community.

Technical college grads are the caregivers and guardians of those children whose parents are working. Early Childhood Education graduates nurture these children and help them grow.

Culinary arts graduates not only put food on the table, their skills are their palette and the tables a canvas on which they bring people together through their art.

WHERE COMMUNITIES TURN | *first*

Wisconsin's Technical Colleges graduate more than 8,300 health care professionals per year. Nearly 100 percent of WTCS health care graduates find employment within six months. These health care workers are directly contributing, not only to Wisconsin's health, but to its economic development.

The technical colleges are an integral part of Wisconsin's health care workforce. They offers more than 50 health care programs. Each graduate makes a significant contribution towards the health care shortage.

WHERE WISCONSIN RESIDENTS TURN | *first*

Some of the most important jobs in our communities are those behind the scenes and most taken for granted.

Before most people are even awake, technical college graduates are maintaining the power lines and clean water that help jump start the morning routine. Each morning, alarm clocks and showers, toasters and coffeemakers are made possible through clean water and continuous power.

Wisconsin is dependent upon the availability of electrical power, clean water and natural resources for productivity, for the health, welfare, economy and enjoyment of residents and tourists; all day every day.

WHERE EMPOWERED WORKERS TURN | *first*

Wisconsin businesses can count on the technical colleges to respond rapidly. Through diverse delivery methods, they serve the workforce of tomorrow with the latest technology in the most in-demand fields.

More than 127,000 of our state's employees receive training from Wisconsin's Technical Colleges each year. These training investments amount to a substantial investment in economic development for the state. Since nearly 90 percent of WTCS grads get jobs in Wisconsin, their salaries contribute further to Wisconsin's economy.

Whatever the training required, Wisconsin's Technical Colleges offer more than 300 career programs for today's economy and beyond, to grow Wisconsin's business and help them remain competitive.

WHERE BUSINESS TURNS | *first*

WHERE OUR COMMUNITIES TURN | *first*

## WISCONSIN'S TECHNICAL COLLEGES

BLACKHAWK	MORAINÉ PARK
CHIPPEWA VALLEY	NICOLET AREA
FOX VALLEY	NORTHCENTRAL
GATEWAY	NORTHEAST WISCONSIN
LAKESHORE	SOUTHWEST WISCONSIN
MADISON AREA	WAUKESHA COUNTY
MID-STATE	WESTERN WISCONSIN
MILWAUKEE AREA	WISCONSIN INDIANHEAD

## WISCONSIN'S TECHNICAL COLLEGES



### ESSENTIAL WORKFORCE | *first*



### ECONOMIC DEVELOPMENT | *first*

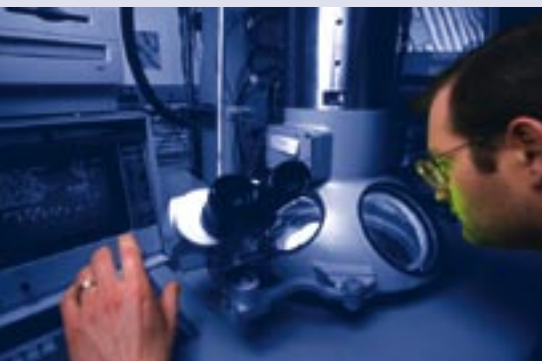


### WHERE OUR COMMUNITIES TURN | *first*

information technology



**Flexible, responsive and innovative:** Business and industry throughout the state turn to Wisconsin's Technical Colleges for training and education of the workforce.



electron microscopy

supervisory management



environmental and pollution control technicians

**Behind all the positions needed to keep our communities productive and safe:** The Wisconsin Technical College System prepares the workers for the most critical occupations.



electrical engineering

nursing



emergency medical technician - paramedic advanced

diagnostic medical sonography

**Administering Wisconsin's physical and economic health,** most of the necessary health care professionals are entering the workforce as Wisconsin Technical College graduates.



public safety officers

**The 24/7 care of our residents is in the hands of technical college graduates.** Fulfilling our most basic yet critical needs for safety, early education and nourishment, technical college graduates are often the first to respond to a request for help.

early childhood education graduates



culinary arts professionals



business software applications



Whether based in or relocating to Wisconsin, employers first call the Wisconsin Technical Colleges for professional development, worker re-tooling and high-tech training. The changing economy requires innovative programs and rapid response times to help business adapt and succeed. Employers value graduates of the Wisconsin Technical Colleges as confident and capable employees.

chemical technician



Within any succession of emergency responders, Wisconsin Technical College graduates play significant roles, especially when it comes to critical moments, whether an automobile breakdown or a car accident. From the telecommunications person who monitors the dispatch; to the ambulance driver and paramedic who arrive on the scene; to the auto mechanic who repairs the damaged car and maintains the ambulance; to the HVAC technician who maintains the hospital heating and cooling; to the computer network administrator who secures the medical information; to the nurse who monitors vitals; to the food service technician who prepares meals for the sick; to the lab technician who examines blood work; to the radiographer that provides the x-rays; Wisconsin's essential needs are dependent upon WTCS graduates.

WHERE WISCONSINITES TURN | *first*